

## Flat 57 Century Tower Dollery Drive

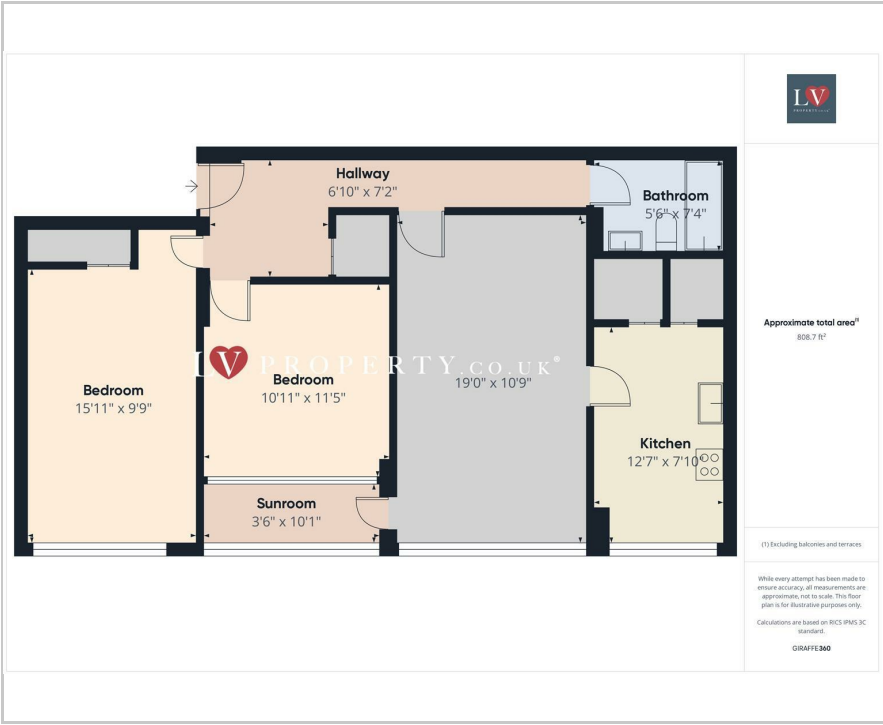
Birmingham, B5 7TF

**£995 PCM**

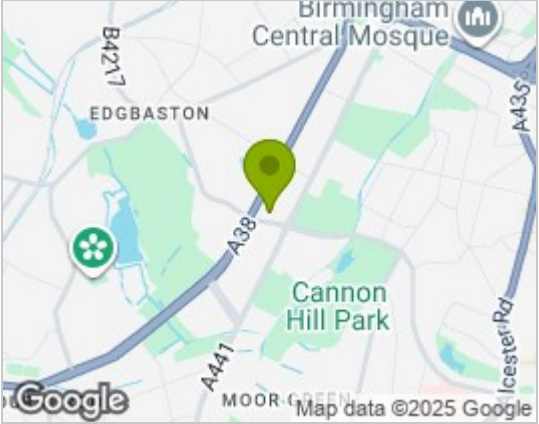




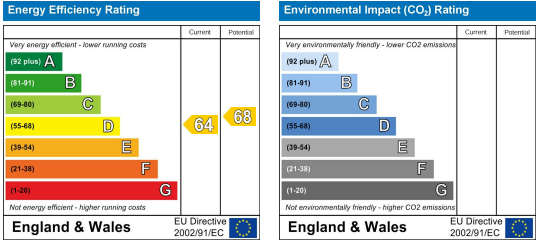
Floor Plan



Area Map



Energy Efficiency Graph



Viewing

Please contact our LV PROPERTY Office on 01212857575 if you wish to arrange a viewing appointment for this property or require further information.

- Two spacious double bedrooms – ideal for professionals or small families
- Bright and modern reception room – perfect for relaxing or entertaining
- Recently refurbished throughout – offering a fresh, contemporary feel
- Allocated parking space – a rare and valuable feature in this area
- Close proximity to Birmingham city centre – shops, restaurants, and attractions nearby
- Excellent transport links – ideal for commuting and accessing local universities
- Located in the sought-after Edgbaston area – a perfect mix of city and greenery
- Available Now



Welcome to this charming flat located on Dollery Drive in the desirable area of Edgbaston, Birmingham. This recently refurbished higher floor flat boasts two spacious double bedrooms, making it an ideal choice for both young professionals and small families.

As you enter, you will find a well-appointed reception room that offers a warm and inviting atmosphere, perfect for relaxation or entertaining guests. The flat also features a modern bathroom, ensuring comfort and convenience for its residents.

One of the standout features of this property is the allocated parking space, a rare find in such a vibrant area. The flat is situated close to the city centre, providing easy access to a wealth of amenities, including shops, restaurants, and cultural attractions. Additionally, the excellent transport links make commuting a breeze, whether you are heading to work or visiting one of the nearby universities.

Surrounded by the beautiful landscapes of Edgbaston, this flat offers a perfect blend of urban living and tranquil surroundings. With its prime location and modern finishes, this property is not to be missed. Whether you are looking to invest or find your next home, this flat presents a fantastic opportunity in Birmingham's thriving market.

These particulars, whilst believed to be accurate are set out as a general outline only for guidance and do not constitute any part of an offer or contract. Intending purchasers should not rely on them as statements of representation of fact, but must satisfy themselves by inspection or otherwise as to their accuracy. No person in this firm's employment has the authority to make or give any representation or warranty in respect of the property.



0121 285 7575  
www.lvproperty.co.uk

157c Warstone Lane, Jewellery Quarter,  
Birmingham, West Midlands, B18 6NZ